

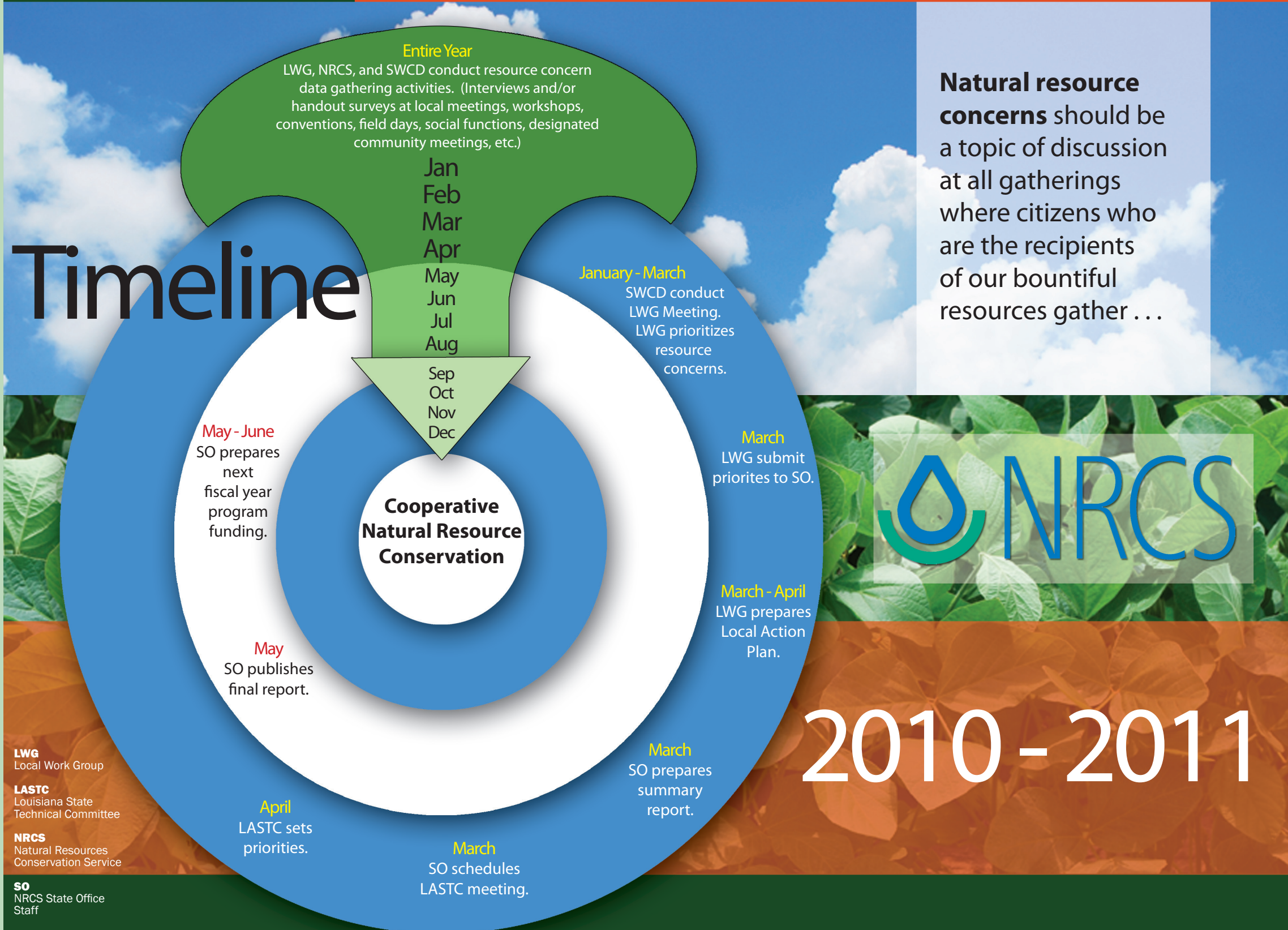
Locally Led Conservation Louisiana

Locally Led Process

Employees and staffs of the Natural Resources Conservation Service (NRCS), the Soil and Water Conservation Districts (SWCD), and Local Work Groups (LWG) should be aware that the locally led conservation (LLC) process is not an annual event; it is an on-going process that is summarized annually. It is the responsibility of NRCS staffs, in partnership with the local soil and water conservation districts, members of the local work groups, and all other interested groups and individuals to aggressively seek out any and all persons or groups who, potentially, can contribute to the LLC effort. The conservation partnership should meet with different groups at different times of the year (whenever and wherever they meet) join their meetings, or conventions, or social functions, and ask them about their resource concerns. They should reflect on who did not participate in the 2010 public meetings and target them for special meetings. They should participate in outreach meetings, local field days, and workshops and ask that resource needs be discussed. Members of SWCDs, RC&D Councils, and local work groups can also mail out natural resource concern surveys, or hand out surveys at meetings and gatherings. Natural resource concerns should be a topic of discussion at all gatherings where citizens who are the recipients of our bountiful resources gather, and these concerns should be recorded by members of the Local Work Group (LWG).

Natural resource concerns should be a topic of discussion at all gatherings where citizens who are the recipients of our bountiful resources gather . . .

Timeline



2010 - 2011

LWG
Local Work Group

LASTC
Louisiana State
Technical Committee

NRCS
Natural Resources
Conservation Service

SO
NRCS State Office
Staff

SWCD
Soil and Water
Conservation District